



## NXMG Series Moulded Case Circuit Breaker

### 1. Application scope

- 1.1 With rated operational voltage up to 400V, rated current up to 600A, NXMG series moulded case circuit breaker is mainly used in the distribution network with the circuit of AC 50HZ/60HZ to distribute electric energy and protect circuits and power equipment from overload and short circuit, etc. Circuit breakers of 250A and below can also be used as infrequent starting and overload and short circuit protection of the motor.
- 1.2 The NXMG molded case circuit breaker developed for the Saudi market is equipped with cage terminal blocks, which is available for two modes of upper and lower down-lead, to make it easier for users to connect. The test tripping button is added on the basis of the locking system, with the cover, lead-sealing device and exposed screw insulation plug equipped as standard, to greatly improve product safety
- 1.3 Standard : IEC 60947-2, 37-SDMS-01, 37-SDMS-02, 37-SDMS-03

### 2. Type designation

NXM G - 125 C □

Rated current

Blank: No lock;  
C: With lock

Frame size rated current:  
125A, 250A, 400A, 600A

Improved type (Apply to Saudi market)

Product model :  
NXM series moulded case circuit breaker

### 3. Operation and installation conditions

3.1 Setting temperature: +55°C

3.2 Normal ambient temperature: -5°C+55°C

Note: If the ambient temperature is between -10°C and +75°C, please refer the characteristic curve of anti-time limit.

3.3 Pollution level: Level 3.

3.4 The inclination to the vertical plane does not exceed 5°

3.5 Installation environmental conditions:

3.5.1 No significant shaking or shock vibration;

3.5.2 The medium is free from explosion hazard, and there are no gases and dust (including conductive dust) that can corrode metals and destroy insulation;

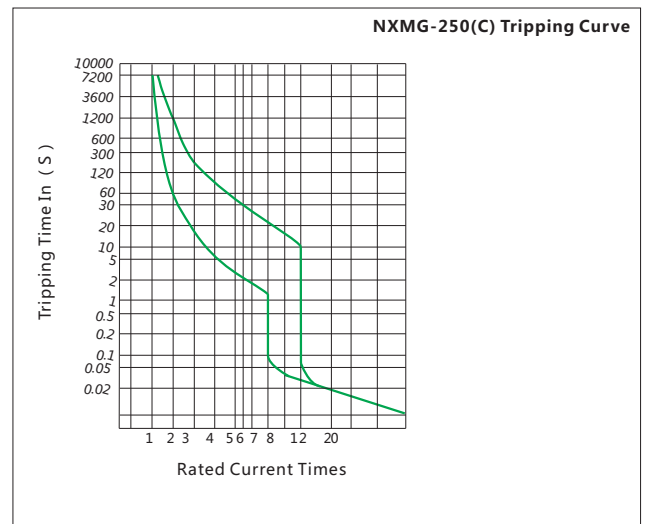
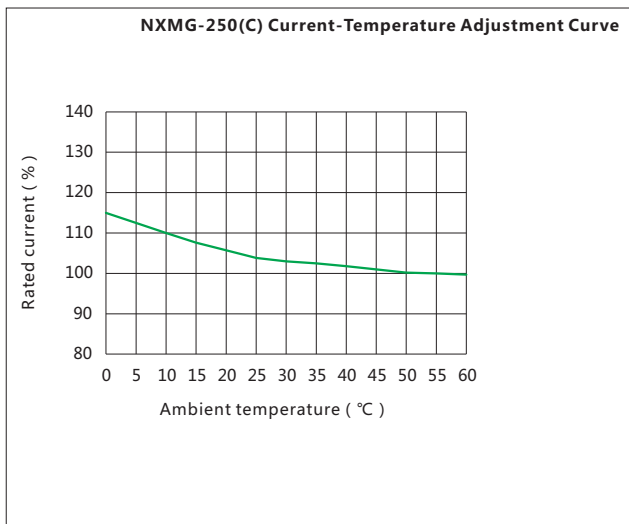
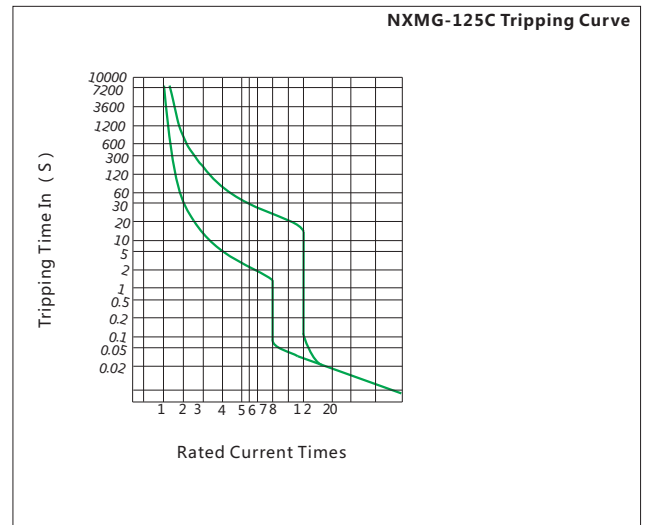
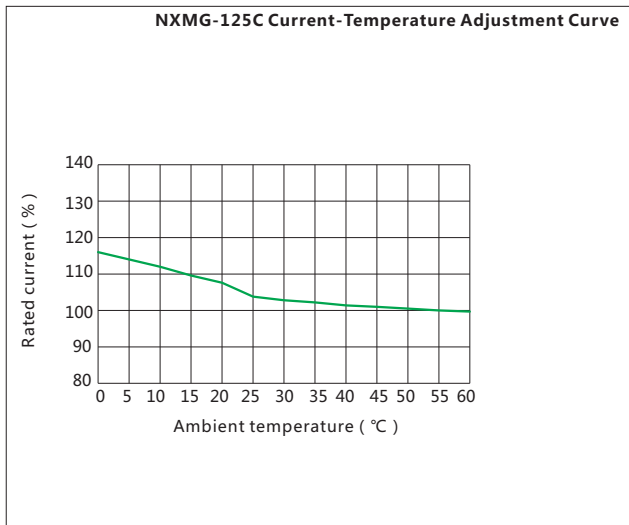
3.6 Air conditions:

The relative humidity of the atmosphere does not exceed 50% when the ambient air temperature is +55°C; the higher relative humidity can be obtained at lower temperatures; the monthly average maximum relative humidity of the wettest month is 90%, and the average minimum temperature of the month is +25°C, and takes the condensation that occurs on the surface of the product due to temperature changes into account.

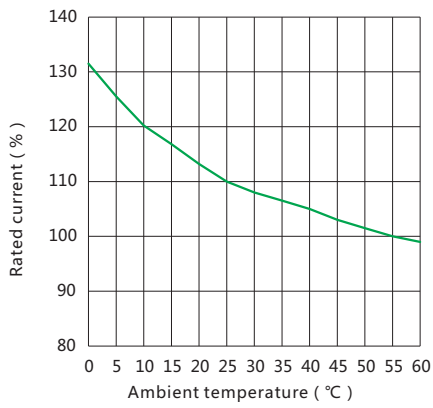
#### 4. Main Technical Parameters

Frame size current		125C	250C	250	400C	400	600C
Number of poles		3P	3P	3P	3P	3P	3P
Frequency ( Hz )		50/60	50/60	50/60	50/60	50/60	50/60
<b>Electrical performance</b>							
Rated operational voltage $U_e$ ( V )		400/230;230/133	400/230;230/133	400/230;230/133	400/230;230/133	400/230;230/133	400/230;230/133
Rated insulation voltage $U_i$ ( V )		1000	1000	1000	1000	1000	1000
Rated impulse withstand voltage $U_{imp}$ ( kV )		8	8	8	8	8	8
Rated current ( A )		20/30/40/50/70/100/125	150/200/250	200	300/400	400	500/600
Rated ultimate short-circuit breaking capacity $I_{cu}$ (kA)	AC400/230V	20	20	20	20	20	40
	AC230/133V	50	50	50	50	50	65
	AC400V/230V	20	20	20	20	20	40
	$I_{cs}=100\%I_{cu}$						
Rated service short-circuit breaking capacity $I_{cs}$ (kA)	AC230/133V	50	50	50	50	50	65
	$I_{cs}=100\%I_{cu}$						
Utilization category		A	A	A	A	A	A
Mechanical life		7000	7000	7000	4000	4000	4000
Electrical Life		1000	1000	1000	1000	1000	1000
Arcing distance ( mm )		≤50	≤50	≤50	≤100	≤100	≤100
<b>Accessories</b>							
Extended rotary manual operating handle					■	■	■
Cover		■	■	■	■	■	■
Locking function		■	■		■		■

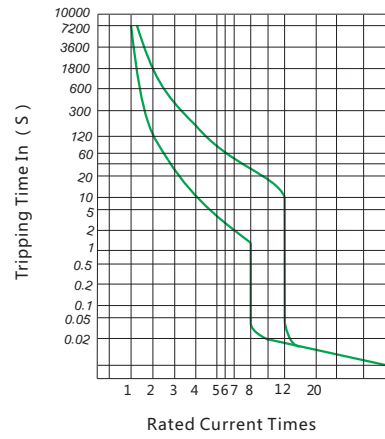
#### 5. Curves (for power distribution, calibrated at 55°C)



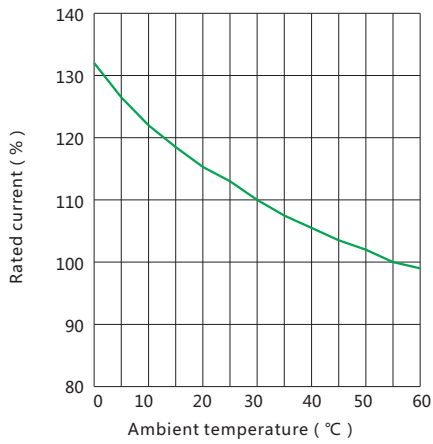
NXMG-400(C) Current-Temperature Adjustment Curve



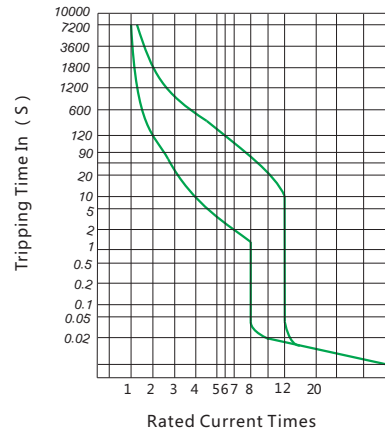
NXMG-400(C) Tripping Curve



NXMG-600C Current-Temperature Adjustment Curve

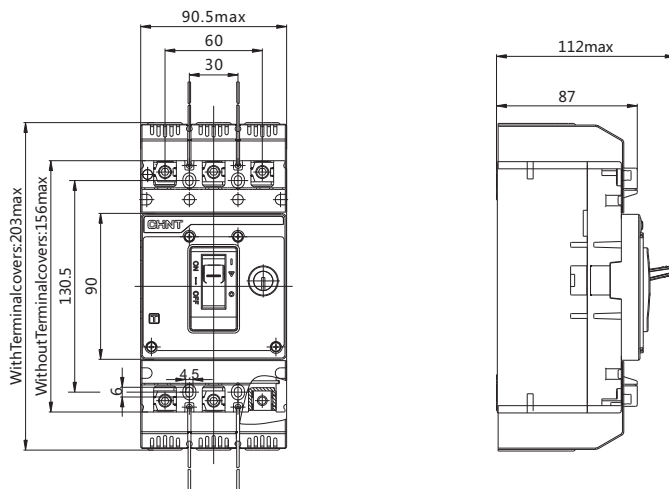


NXMG-600C Tripping Curve

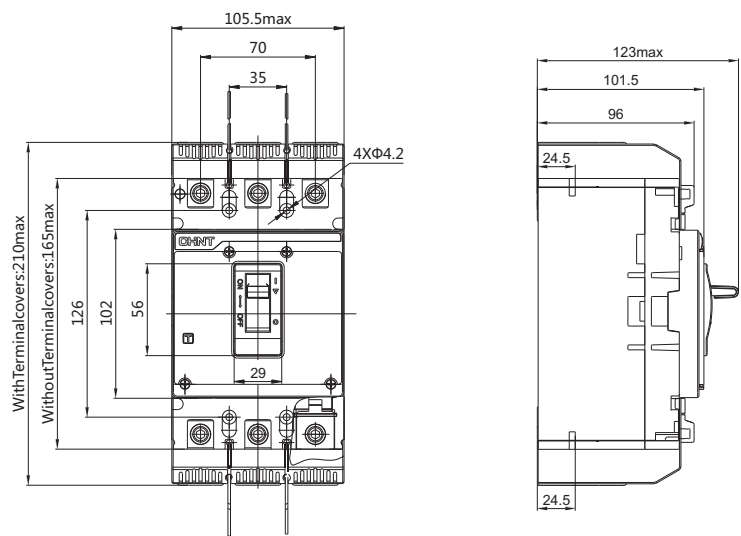


## 6. Overall and mounting dimensions

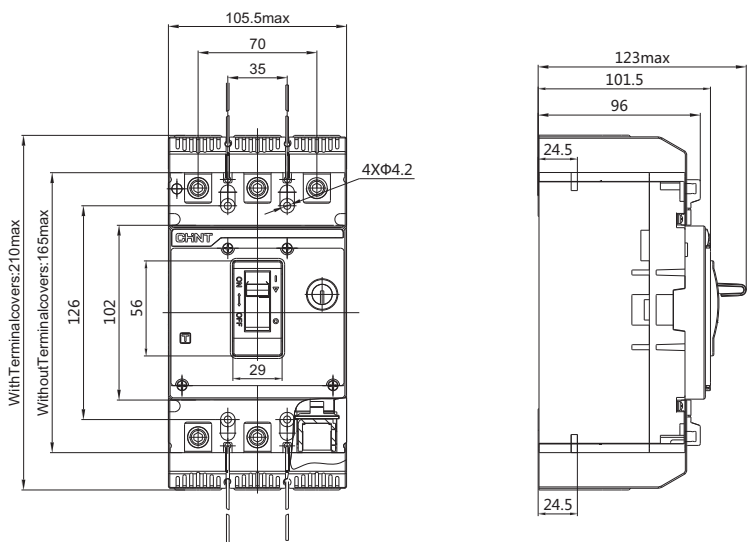
NXMG-125C



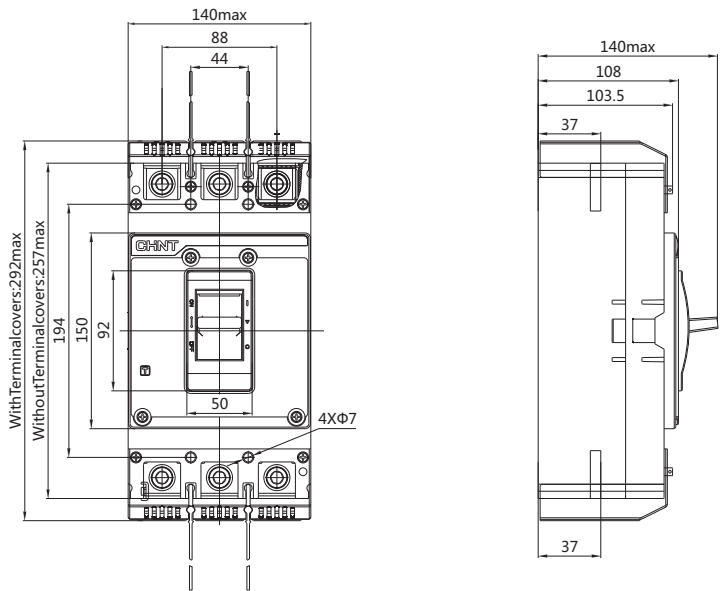
NXMG-250



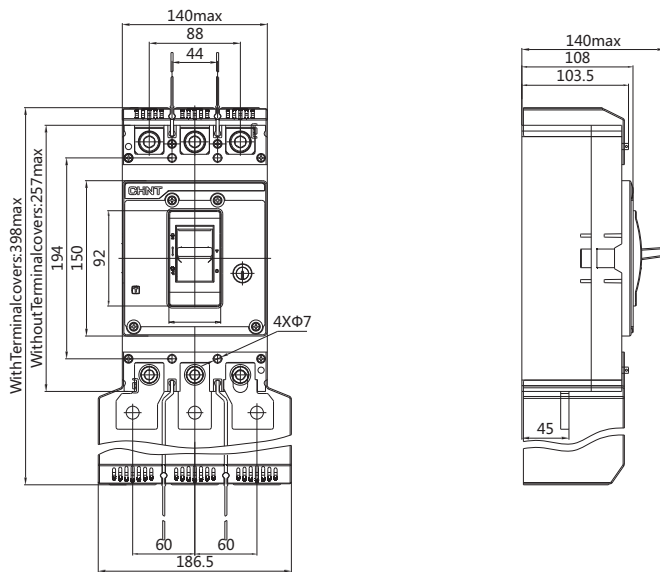
NXMG-250C



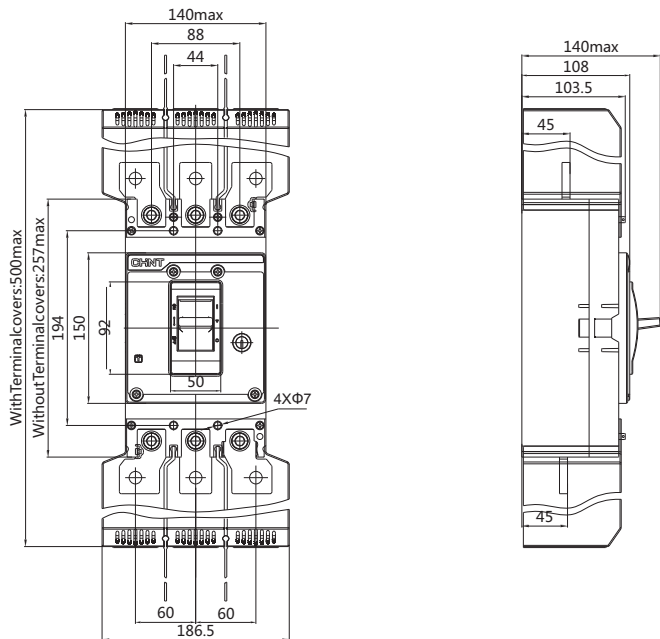
NXMG-400



NXMG-400C



NXMG-600C



## 7. Ordering information

7.1 When ordering the goods, the user shall indicate the following items :

- 7.1.1 Product model and name
- 7.1.2 Rated current(A)
- 7.1.3 Locking function
- 7.1.4 Quantity

7.2 Example of ordering: 100 pcs of NXMG MCCB, 100A of rated current, with locking function.

